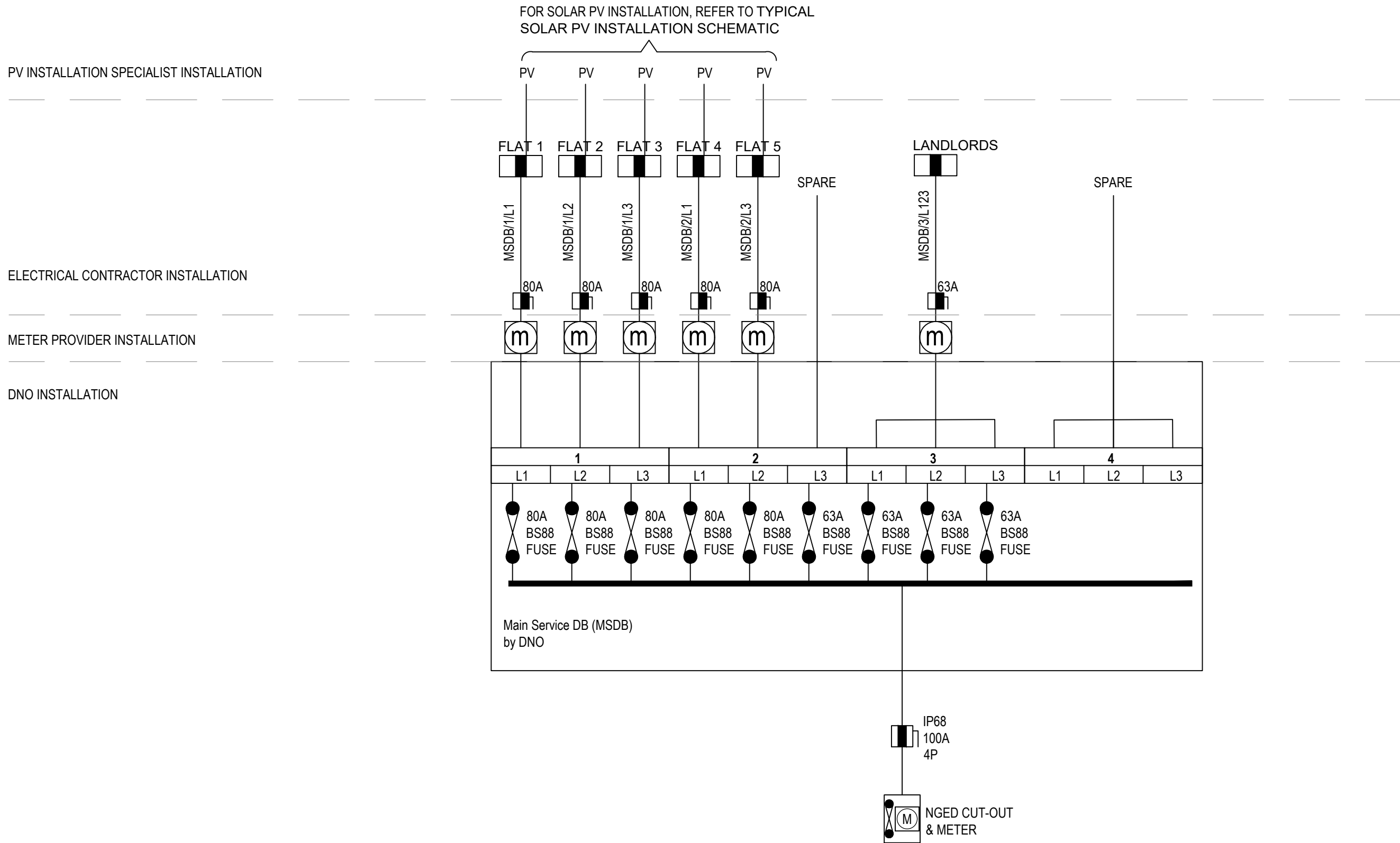
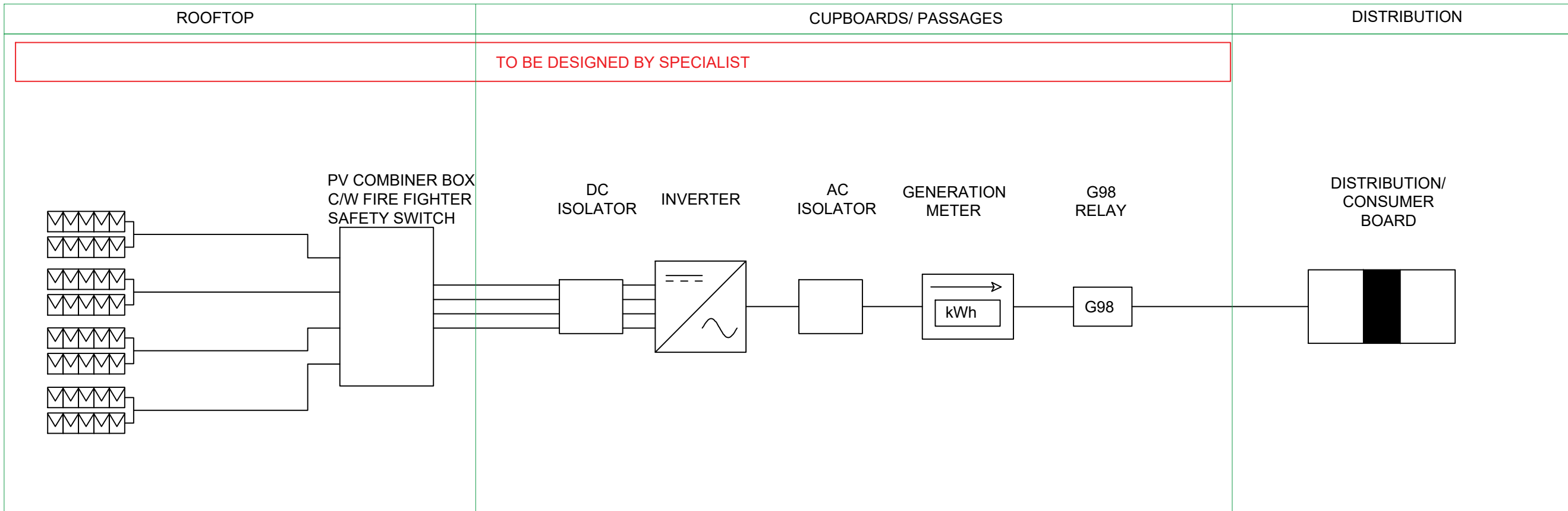


© COPYRIGHT EDP:
THIS DRAWING REMAINS THE PROPERTY OF EDP ENVIRONMENTAL.
NOTE: DO NOT SCALE FROM THIS DRAWING. ALL DIMENSIONS SHALL
BE CHECKED ON SITE. ONLY FIGURED DIMENSIONS SHALL BE USED.
IF IN DOUBT, ASK.
THIS DRAWING SHALL BE READ IN CONJUNCTION WITH ALL
RELEVANT DRAWINGS, DOCUMENTS AND INFORMATION PREPARED
BY THE ARCHITECT, OTHER CONSULTANTS AND SPECIALISTS.
THIS DRAWING SHALL BE READ IN CONJUNCTION WITH EDP
ENVIRONMENTAL MECHANICAL & ELECTRICAL SERVICES
SPECIFICATION & TECHNICAL SCHEDULES

HEALTH & SAFETY
STANDARD CONSTRUCTION HAZARDS THAT A COMPETENT
CONTRACTOR WOULD BE AWARE OF DURING NORMAL WORKING
PRACTICES ARE NOT IDENTIFIED ON THIS DRAWINGS.
RISKS THAT MAY NOT BE IMMEDIATELY APPARENT ARE LISTED
BELOW.

TYPICAL SOLAR PV INSTALLATION SCHEMATIC



Id No.	Connected From	Connected To	Cable Make Up	Phase Conductor Size (mm²)	Cable Type	CPC Description
MSDB/ 1/L1	MSDB	DBF1	1 x 1 x 3c	16	Multicore 90°C thermosetting armoured *RUN TO 70°C Cu (4D4)	Integral 16
MSDB/ 1/L2	MSDB	DBF2	1 x 1 x 3c	16	Multicore 90°C thermosetting armoured *RUN TO 70°C Cu (4D4)	Integral 16
MSDB/ 1/L3	MSDB	DBF3	1 x 1 x 3c	16	Multicore 90°C thermosetting armoured *RUN TO 70°C Cu (4D4)	Integral 16
MSDB/ 2/L1	MSDB	DBF4	1 x 1 x 3c	16	Multicore 90°C thermosetting armoured *RUN TO 70°C Cu (4D4)	Integral 16
MSDB/2/L2	MSDB	DBF5	1 x 1 x 3c	16	Multicore 90°C thermosetting armoured *RUN TO 70°C Cu (4D4)	Integral 16
MSDB/3/L123	MSDB	DBLL	1 x 1 x 5c	16	Multicore 90°C thermosetting armoured *RUN TO 70°C Cu (4D4)	Integral 16

P02	22.08.2025	Updated
P01	26.02.2025	Initial Issue
REV	DATE	REVISION DESCRIPTION
SCHEDULE OF REVISIONS		

Architects Model:
Structural Model:
Other Model:
Model Schedule Key: [Discipline] _ [Date Received] _ [Revision] _ [Specific Model Number]

EDP
ENVIRONMENTAL

HEAD OFFICE
EMBLEM HOUSE
PYNES HILL
EXETER, EX2 5BA
EXETER T: 01392 367 237
BRISTOL T: 01173 258 975
FAREHAM T: 01329 800 710
LONDON T: 02076 091 899
CHOBHAM T: 01276 300 280

CLIENT:
COUNCIL OF THE ISLE OF SCILLY

PROJECT:
PARK HOUSE, ISLE OF SCILLY
DRAWING TITLE:
INDICATIVE LV SCHEMATIC

SERVICE TYPE:
ELECTRICAL
DRAWING STATUS CODE:
S3 - REVIEW AND COMMENT

SCALE @ A1
NTS

INTERNAL PROJECT REF:
2606

DRAWING NUMBER:
2606-EDP-XX-XX-DR-E-7000
PROJECT NUMBER - ORIGINATOR - ZONE - LEVEL - TYPE - ROLE - SEQUENTIAL NUMBER

Designed by: AT
Drawn by: AT
Checked by: CH
Revision: P02